



Andy Beshear  
GOVERNOR

## TRANSPORTATION CABINET

200 Mero Street  
Frankfort, Kentucky 40601

Jim Gray  
SECRETARY

December 5, 2023

CALL NO. 403  
CONTRACT ID NO. 232495  
ADDENDUM # 1

Subject: Knox County, FD04 026 9006 013-016  
Letting December 14, 2023

- (1) Revised - Note - Pages 12 and 17-20 of 49
- (2) Added - Note - Page 12a of 49
- (3) Revised - Summary - Pages 32-33 of 49
- (4) Omit Proposal Page 37 of 49
- (5) Revised - Proposal Bid Items - Page 49 of 49

Proposal revisions are available at <http://transportation.ky.gov/Construction-Procurement/>.

If you have any questions, please contact us at 502-564-3500.

Sincerely,

Rachel Mills,

A handwritten signature in black ink that reads "Rachel Mills".

Rachel Mills, P.E.  
Director  
Division of Construction Procurement

RM:mr  
Enclosures

**SPECIAL NOTE FOR STAKING  
KY 11**

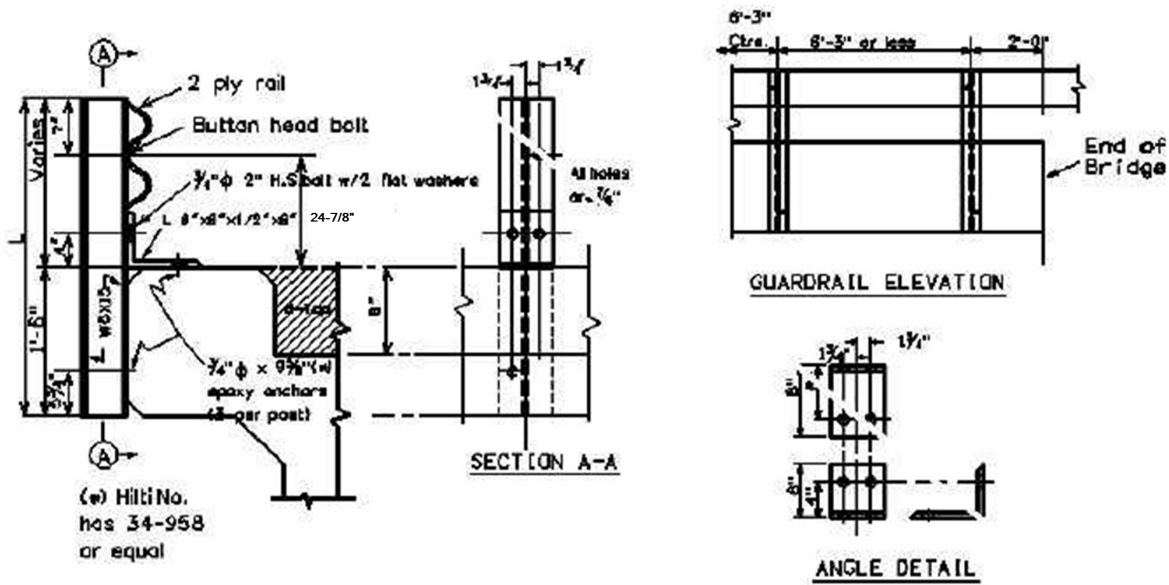
---

In lieu of the requirements of Section 201, perform the following:

1. Determine and/or verify Bridge Guardrail Case I posts spacing, elevations, and Dimension L (see detail drawing) to provide proper height and alignment with the roadway pavement and Single Face A guardrail; and
2. Obtain the Engineer's approval of all plans and details to be developed and furnished by the Contractor prior to incorporating into the work.

The Department will perform all other Staking.

**GUARDRAIL ON BRIDGE, CASE I  
BLACKTOP FLUSH WITH CURB OR ABOVE**



Bridge MP	D =	W =	L =	No. Posts	LF of 2 PLY Rail

L = Length of Guardrail Post      D = Curb Height      W = Width of Bridge Curb

**WARRANTS:** When guardrail can be bolted to the back of the bridge curb, and where the bridge surface is flush with the curb top, and where the clear distance between the faces of the guardrail is less than 20 Feet, remove existing concrete and/or guardrail bridge rail and use Case I Bridge Guardrail.

**NOTES:** 1. If asphalt paving is included in the Contract and the dimension from the top of the existing riding surface to the top of the curb is 2 inches or less, pave the surface flush to the top of the curb, and use Case I Bridge Guardrail.

2. Do not use Case I Bridge Guardrail if existing pavement is not flush with the pavement and asphalt pavement is not included in the Contract or if the dimension from top of the existing riding surface to the top of the curb is greater than 2 inches.

## SPECIAL NOTES FOR GUARDRAIL KY 11

---

### I. DESCRIPTION

Except as specified herein, perform all work in accordance with the Department's 2019 Standard and Supplemental Specifications, Special Notes and Special Provisions, and 2020 Standard and Sepia Drawings, current editions. Article references are to the Standard Specifications.

Furnish all equipment, labor, materials, and incidentals for the following work items:

- (1) Site preparation and erosion control; (2) Guardrail, End Treatments, and Terminal Sections; (3) Delineators for guardrail; (4) Maintain and control traffic; and (5) All other work specified as part of this contract.

### II. MATERIALS

Except as specified herein, provide for all materials to be sampled and tested in accordance with the Department's Sampling Manual and make the materials available for sampling a sufficient time in advance of the use of the materials to allow for the necessary time for testing.

**A. Maintain and Control Traffic.** See Traffic Control Plan.

**B. Guardrail.** Furnish guardrail system components according to section 814, the Standard and Sepia Drawings, and the detail drawings, except use steel posts only, no alternates. Furnish Extra Length Posts in nine (9) foot lengths.

**D. Bridge Guardrail Case I.** Furnish Bridge Guardrail Case I according to the detail drawing as modified by the contractor and approved by the Engineer.

**C. Delineators for Guardrail.** Furnish bi-directional white Delineators for Guardrail according to the Standard Drawing RBR-055-01.

**D. Erosion Control.** See Special Notes for Erosion Control.

### III. CONSTRUCTION METHODS

**A. Maintain and Control Traffic.** See Traffic Control Plan.

**B. Site Preparation.** Be responsible for all site preparation, including but not limited to, clearing and grubbing, excavation, embankment, and removal of all obstructions or any other items; regrading, reshaping, adding and compacting of suitable materials on the existing shoulders to provide proper template or foundation for the guardrail; temporary

Guardrail – KY 11  
Page 2 of 4

pollution and erosion control; disposal, of excess and waste materials and debris; and final dressing, cleanup, and seeding and protection. Perform all site preparation as approved or directed by the Engineer. See special Note for Shouldering.

**C. Guardrail.** Except as specified herein, construct guardrail system according to Section 719, the Standard and Sepia Drawings, the detail drawings, and/or as directed by the Engineer. Consider the locations listed on the summaries and/or shown on the drawings to be approximate only. The Engineer will determine the exact termini for individual guardrail installations at the time of construction. The Engineer will determine the locations requiring Nested Rail at the time of construction. Unless directed otherwise by the Engineer, provide a minimum shoulder width as shown on the drawings. Construct radii at entrances and road intersections as directed by the Engineer.

Erect guardrail to the lines and grades shown on current Standard and Sepia Drawings or as directed by the Engineer by any method approved by the Engineer that allows construction of the guardrail to the true grade without apparent sags. Support cantilevered terminal sections with an additional post.

When installing guardrail, do not leave the blunt end exposed where it would be hazardous to the public. When it is not practical to complete the construction of the guardrail and the permanent end treatments and terminal sections first, provide a temporary end by connecting at least 25 feet of rail to the last post, and by slightly flaring, and burying the end of the rail completely into the existing shoulder. If left overnight, place a drum with bridge panel in advance of the guardrail end and maintain during use.

**D. Bridge Guardrail Case I.** Construct Bridge Guardrail Case 1 attached to the box culvert headwall according to the revised detail drawing as modified and/or as directed by the Engineer.

**E. Delineators for Guardrail.** Install delineators for guardrail according to Standard Drawing RBR-055-01, except space 50 feet on centers.

**F. Property Damage.** Be responsible for all damage to public and/or private property resulting from the work. Restore damaged roadway features and private property at no additional cost to the Department.

**G. Coordination with Utility Companies.** Locate all underground, above ground and overhead utilities prior to beginning construction. Be responsible for contacting and maintaining liaison with all utility companies that have utilities located within the project limits. Do not disturb existing overhead or underground utilities. It is not anticipated that any utility facilities will need to be relocated and/or adjusted; however, in the event that it is discovered that the work does require that utilities be relocated and/or adjusted, the utility companies will work concurrently with the Contractor while relocating their facilities. Be responsible for repairing all utility damage that occurs as a result of guardrail operations at no additional cost to the Department. See Utility Impact Statement.

Guardrail – KY 11  
Page 3 of 4

**H. Right of Way Limits.** The Department has not established exact limits of the Right-of-Way. Limit work activities to obvious Right-of-Way, permanent or temporary easements, and work areas secured by the Department through consent and release of the adjacent property owners. Be responsible for all encroachments onto private lands.

**I. Disposal of Waste.** Dispose of all removed concrete, debris, and other waste and debris off the Right-of-Way at sites obtained by the Contractor at no additional cost to the Department. See Special Note for Waste and Borrow.

**J. Final Dressing, Clean Up, and Seeding and Protection.** Apply Class A Final Dressing to all disturbed areas, both on and off the Right-of-Way. Sow all disturbed earthen areas according to the Special Notes for Erosion Control.

**K. Erosion Control.** See Special Notes for Erosion Control.

**IV. METHOD OF MEASUREMENT**

**A. Maintain and Control Traffic.** See Traffic Control Plan.

**B. Site preparation.** Other than the bid items listed, the Department will not measure Site Preparation for separate payment but shall be incidental to Guardrail, End Treatments, and Terminal Sections, as applicable.

**C. Guardrail System.** See Section 719.04.

**D. Delineators for Guardrail.** See the Standard Drawing RBR-055-01.

**E. Extra Length Posts.** The Department will measure Extra Length Posts in individual units, Each.

**F. Erosion Control.** See Special Notes for Erosion Control.

**G. Guardrail Single Face A.** See Sepia Number 1.

**V. BASIS OF PAYMENT**

**A. Maintain and Control Traffic.** See Traffic Control Plan.

**B. Guardrail System.** See Section 719.05.

**D. Delineators for Guardrail.** See the Standard Drawing RBR-055-01.

Guardrail – KY 11  
Page 4 of 4

**E. Extra Length Posts.** Accept payment at the Contract unit price as full compensation for all materials, labor, equipment, and incidentals for furnishing and the Extra Length Guardrail Posts as shown on the drawings and/or as directed by the Engineer.

**F. Guardrail Single Face A.** See Sepia Number 1.

# MATERIAL SUMMARY

**CONTRACT ID: 232495**

**061GR23P74-FD04**

**MP06100112303**

GREEN BRIAR ROAD (KY 11) FROM 660 FEET NORTH OF HAMMONDS FORK ROAD EXTENDING NORTH TO 1.405 MILES SOUTH OF COBB LANE GUARDRAIL, A DISTANCE OF .16 MILES.

Project Line No	Bid Code	DESCRIPTION	Quantity	Unit
0005	01987	DELINEATOR FOR GUARDRAIL BI DIRECTIONAL WHITE	22.00	EACH
0010	02351	GUARDRAIL-STEEL W BEAM-S FACE	862.50	LF
0015	02355	GUARDRAIL-STEEL W BEAM-S FACE A - (REVISED 12-5-2023)	100.00	LF
0020	02367	GUARDRAIL END TREATMENT TYPE 1	2.00	EACH
0025	02399	EXTRA LENGTH GUARDRAIL POST - (9 FOOT)	25.00	EACH
0030	02562	TEMPORARY SIGNS	280.00	SQFT
0035	02650	MAINTAIN & CONTROL TRAFFIC - (KY 11)	1.00	LS
0040	02726	STAKING - (KY 11)	1.00	LS
0055	02569	DEMOBILIZATION	1.00	LS
0060	08805	GUARDRAIL-BRIDGE CASE I - (ADDED 12-5-2025)	25.00	LF
0065	02360	GUARDRAIL TERMINAL SECTION NO 1 - (ADDED 12-5-2025)	2.00	EACH

**CONTRACT ID: 232495**

**061GR23P74-FD04**

**MP06134412301**

DAVIS BEND ROAD (KY 3441) FROM 3485 FEET NORTH OF EDGEWOOD DRIVE EXTENDING TO 1.3591 MILES SOUTH OF LUNDY BRANCH GUARDRAIL, A DISTANCE OF .26 MILES.

Project Line No	Bid Code	DESCRIPTION	Quantity	Unit
0060	01987	DELINEATOR FOR GUARDRAIL BI DIRECTIONAL WHITE	30.00	EACH
0065	02351	GUARDRAIL-STEEL W BEAM-S FACE	1,375.00	LF
0070	02367	GUARDRAIL END TREATMENT TYPE 1	2.00	EACH
0075	02399	EXTRA LENGTH GUARDRAIL POST - (9 FOOT)	10.00	EACH
0080	02562	TEMPORARY SIGNS	250.00	SQFT
0085	02650	MAINTAIN & CONTROL TRAFFIC - (KY 3441)	1.00	LS
0090	24381EC	G/R STEEL W BEAM-S FACE (NESTED) - WITH DOUBLE POSTS	50.00	LF
0095	02569	DEMOBILIZATION	1.00	LS



**GUARDRAIL SUMMARY  
KY 11**

NEW GUARDRAIL												REMOVE GUARDRAIL			
LANE	END TREAT.	BEGIN MILEPOINT	END MILEPOINT	END TREAT.	LIN FEET	SINGLE FACE A	REMARKS	LANE	BEGIN MILEPOINT	END MILEPOINT	LIN FEET	REMARKS			
North Bound	Type 1	19.850	19.950	Terminal Section No. 1	537.5	50.0									
South Bound	Terminal Section No. 1	19.950	20.010	Type 1	325.0	50.0									
					<b>Totals =</b>	<b>862.5</b>	<b>100.0</b>						<b>Totals = 0.0</b>		

Type 1 2  
 Type 2A 0  
 Type 3 0  
 Type 4 0  
 Type 7 0  
 Terminal Sect No. 1 2

**PROPOSAL BID ITEMS**

232495

Page 1 of 1

Report Date 12/5/23

**Section: 0001 - GUARDRAIL**

LINE	BID CODE	ALT	DESCRIPTION	QUANTITY	UNIT	UNIT PRIC	FP	AMOUNT
0010	01987		DELINEATOR FOR GUARDRAIL BI DIRECTIONAL WHITE	52.00	EACH		\$	
0020	02351		GUARDRAIL-STEEL W BEAM-S FACE	2,237.50	LF		\$	
0030	02355		GUARDRAIL-STEEL W BEAM-S FACE A (REVISED 12-5-2023)	100.00	LF		\$	
0035	02360		GUARDRAIL TERMINAL SECTION NO 1 (ADDED 12-5-2025)	2.00	EACH		\$	
0040	02367		GUARDRAIL END TREATMENT TYPE 1	4.00	EACH		\$	
0050	02399		EXTRA LENGTH GUARDRAIL POST (9 FOOT)	35.00	EACH		\$	
0060	02562		TEMPORARY SIGNS	530.00	SQFT		\$	
0070	02650		MAINTAIN & CONTROL TRAFFIC (KY 11)	1.00	LS		\$	
0080	02650		MAINTAIN & CONTROL TRAFFIC (KY 3441)	1.00	LS		\$	
0090	02726		STAKING (KY 11)	1.00	LS		\$	
0095	08805		GUARDRAIL-BRIDGE CASE I (ADDED 12-5-2025)	25.00	LF		\$	
0100	24381EC		G/R STEEL W BEAM-S FACE (NESTED) WITH DOUBLE POSTS	50.00	LF		\$	

**Section: 0002 - DEMOBILIZATION**

LINE	BID CODE	ALT	DESCRIPTION	QUANTITY	UNIT	UNIT PRIC	FP	AMOUNT
0120	02569		DEMOBILIZATION	1.00	LS		\$	